

APPENDIX C

Director of Housing and Regeneration

Anticipated Management Structure following integration of the ALMO into the new Department for Housing and Regeneration

Housing Strategy & Analysis Unit

Assistant Director (Housing Services)

Assistant Director Finance & Resources

Assistant Director Regeneration & Economic Development
(under review)

Assistant Director Asset Management
(under review)

Head of Housing Management

Head of Neighbourhood Services & Tenancy Management,

Head of Estate Services

Head Of Housing Advice & Assessment

Head Of Accommodation Services

Head Of H&F Advice

Head of Finance

Head of IT & Performance

Head of Leasehold Services

Head of Procurement

Head of Regeneration Programmes - North

Head of Regeneration Programmes - South

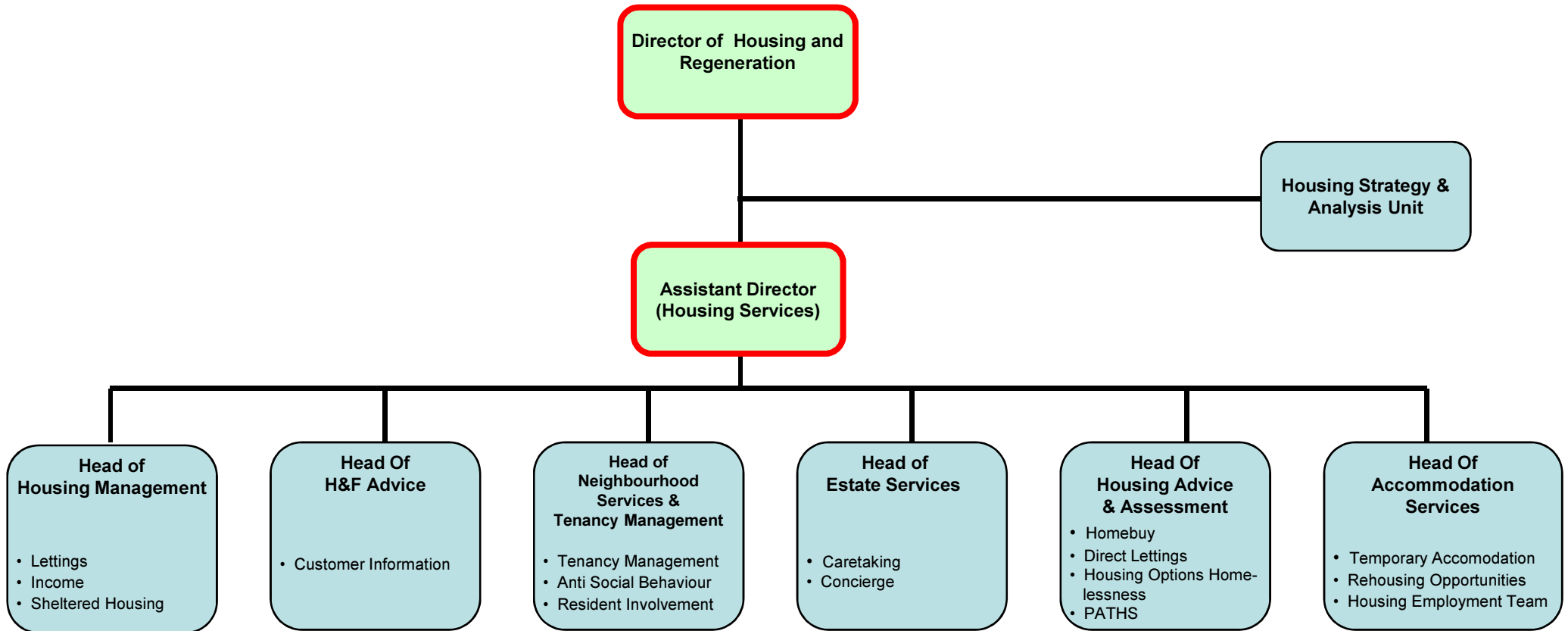
Head of Economic Development & Skills

Head of Repairs & Maintenance

Head of Major works

The proposed structure is dependent on the outcomes of the Residents Consultation Programme and subject to Cabinet approval in 2011

Anticipated Management Structure for the new Housing Services Division



The proposed structure is dependent on the outcomes of the Residents Consultation Programme and subject to Cabinet approval in 2011